

AccessAdapt, Alpine, Altitude, BlackDiamond, EPCenter, ExtremeWorks Everywhere, Ethernet Everywhere, Extreme Enabled, Extreme Ethernet Everywhere, Extreme Networks, Extreme Standby Router Protocol, Extreme TurboDrive, Extreme Velocity, ExtremeWare, ExtremeWorks, ExtremeXOS, Go Purple Extreme Solution, ExtremeXOS ScreenPlay, ReachNXT, Sentiant, ServiceWatch, Summit, SummitStack, Triumph, Unified Access Architecture, Unified Access RF Manager, UniStack, the Extreme Networks logo, the Alpine logo, the BlackDiamond logo, the Extreme TurboDrive logo, the Summit logo, and the Powered by ExtremeXOS logo are trademarks or registered trademarks of Extreme Networks, Inc. or its subsidiaries in the United States and/or other countries.

sFlow is a registered trademark of InMon Corporation.

All other registered trademarks, trademarks, and service marks are property of their respective owners.

© 2009 Extreme Networks, Inc. All Rights Reserved.



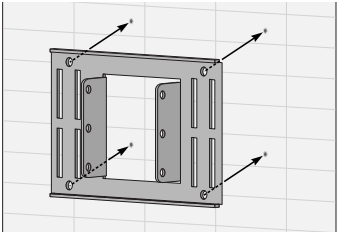
### Installation Guide

## Altitude™ 3550 Access Point

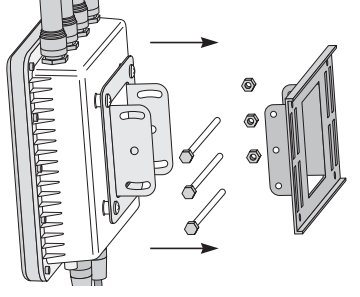
**Note:** The AP3550 tilt angle may need to be adjusted during the antenna alignment process. Verify the antenna polarization angle when installing, and ensure the antennas are oriented correctly in respect to the AP3550's coverage area.

### Mounting the AP3550 on a Wall

- 1 Ensure the AP3550 is oriented properly, and attach the bracket to a wall with flat side flush against the wall. Position the bracket in the intended location and mark the positions of the four mounting screw holes.



- 2 Drill four holes in the wall that match the screws and wall plugs.
- 3 Secure the bracket to the wall.
- 4 Attach the square mounting plate to the AP3550 with the supplied screws. Attach the AP3550 to the plate on the wall.
- 5 Secure the AP3550 to the bracket. Fit the edges of the V-shaped clamp parts into the slots on the flat side of the rectangular plate.



(5)

To mount the AP3550 access point to a pole (1.5 - 18 inches in diameter) or wall, an AP3550 Mounting Kit (Part No. 15733) can be separately ordered. This kit contains the brackets and accessories required to mount the access point.

If installing the AP3550 in an outdoor area prone to high winds and rain, Extreme Networks recommends using the AP3550 Heavy Weather Kit (Part No. 15732). This kit affords additional protection to shield an AP3550 from high wind and water damage as a result of driving rain.

<b>RJ-45</b>	1	2	3	4,5	6	7	8
<b>DB9</b>	8	6	2	5	3	4	7

Note: An RJ-45 to Serial (9-pin D) cable is required to make a connection to the AP3550's Console port. This cable is not supplied and must be provided by the customer. The pinouts for this cable are shown in the following table.

- 1 AP3550 802.11 a+b/g dual-radio access point (AP3550-US Part No. 15722 AP3550-ROW Part No. 15726)
- 1 AP3550 Installation Guide (this document)
- 1 set of cable connectors
- 3 antenna connector dust covers
- 2 connector cover AP67 jacks, plus chain\_LTW-M9/14-SB

The AP3550 access point ships with the following components:

### Verifying Package Contents

Inspect the contents and report any missing or damaged items to your sales representative.

**Note - This AP3550 Installation Guide is intended to assist professional installers with the installation of the AP3550. Once secured in its intended operational position, refer to the AP35xx Product Reference Guide for detailed instructions on configuring the access point's feature set. For more information, go to <http://www.extremenetworks.com/go/documentation>.**

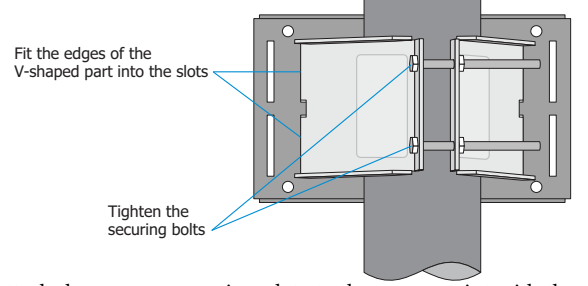
The AP3550 model access point (AP3550-US Part No. 15722 AP3550-ROW Part No. 15726) from site survey and site network analysis.

Installation procedures, refer to the site-specific documentation derived from site-specific installation procedures. For detailed site-specific and guidelines to use during the installation process. This guide does not provide installation concepts. This guide provides specifications, procedures and guidelines to use during the installation process. This guide does not provide site-specific installation procedures. For detailed site-specific installation procedures, refer to the site-specific documentation derived from site survey and site network analysis.

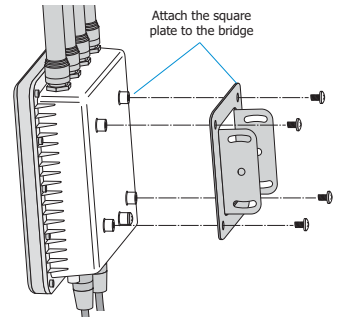
### To the Installer

### Mounting the AP3550 on a Pole

- 1 Ensure the AP3550 is oriented properly, and fit the edges of the V-shaped clamp parts into the slots on the flat side of the rectangular plate.
- 2 Place the V-shaped bracket clamp parts around the pole and tighten the nuts just enough to hold the bracket to the pole. (The bracket may need to be rotated around the pole during the antenna alignment process).



- 3 Attach the square mounting plate to the access point with the supplied screws.



(4)

- 4 Attach the AP3550 and mounting plate to the bracket already fixed to the pole. If necessary, use the "U-bracket" (included in the mounting kit), in conjunction with the band clamp, to expand the diameter of the bracket to a maximum of 18 inches.
- 5 Secure the AP3550 to the pole.

- Read the installation instructions before connecting the Power Injector to a power source.
- Follow basic electricity safety measures whenever connecting the Power Injector to its power source.
- This product relies on the building installation for short-circuit (over current) protection. Ensure a fuse or circuit breaker no larger than 120 VAC, 3A U.S. (240VAC, 1.5A international) is used on the phase conductor.
- A voltage mismatch can cause equipment damage and could pose a fire hazard. If the voltage indicated on the label is different from the power outlet voltage, do not connect the Power Injector to that particular outlet.
- The Power Injector Data In and Data & Power Out ports are shielded RJ-45 sockets. Only RJ-45 data connectors should be connected to these sockets.

### Warnings

- Only trained and qualified personnel should install and remove the Power Injector.
- The power cord must be a three-conductor type (two current carrying conductors and one ground conductor) terminated on one end by an IEC 60320 appliance coupler (for Power Injector connection) and on the other end by a plug containing a ground (earth) contact.
- The power cord must be rated for a minimum of 250VAC RMS operation, with a minimum rated current capacity of 5A [or a minimum wire gauge of 18AWG (0.75mm²)].
- The AC wall-socket outlet must be near the Power Injector and easily accessible.
- The Power Injector Data and Data & Power interfaces are qualified as SELV (Safety Extra-Low Voltage) circuits according to IEC 60950. These interfaces can only be connected to SELV interfaces on other equipment.

Before operating any equipment, review this document for any hazards associated with installation and use of the device. Also, review standard practices for preventing accidents.

### Safety Information

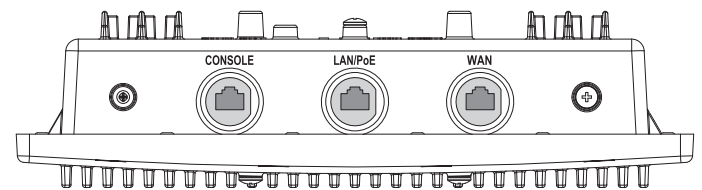
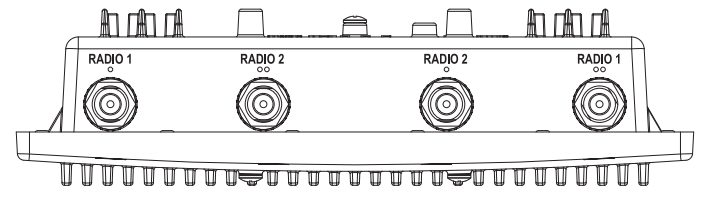
If using a single-port Power-Over-Ethernet solution to supply power to the AP3550, the AP3550 Power Tap (Part No. 15729) must be used. This single-port power injector is designed specifically for outdoor use with the AP3550.

### Introduction

The AP3550 is a ruggedized access point designed for outdoor deployments. The AP3550 employs a dual-mode simultaneous 802.11a and 802.11g radio solution.

### Product Description

The AP3550 has a separate LAN and WAN port for connecting to the network and receiving power (over the AP3550's LAN port only). The AP3550 has four antenna connectors (on top) supporting 802.11a and 802.11g antenna options. However, the AP3550 antenna suite is designed for outdoor deployments, so the existing AP3510 antenna suite should not be used with an AP3550. The AP3550's mode of operation is identical to the AP3510's.



### Mounting the AP3550

The AP3550 can be mounted to a pole (1.5 - 18 inches in diameter) or to a wall. The AP3550 Wall Mounting Kit (Part No. 15733) is not included with AP3550 and must be ordered separately.

The mounting bracket has four parts: one rectangular plate used for pole and wall mounting, one square plate that attaches directly to the AP3550 and two plates forming an adjustable V-shaped clamp for pole mounting.

(3)

(6)

